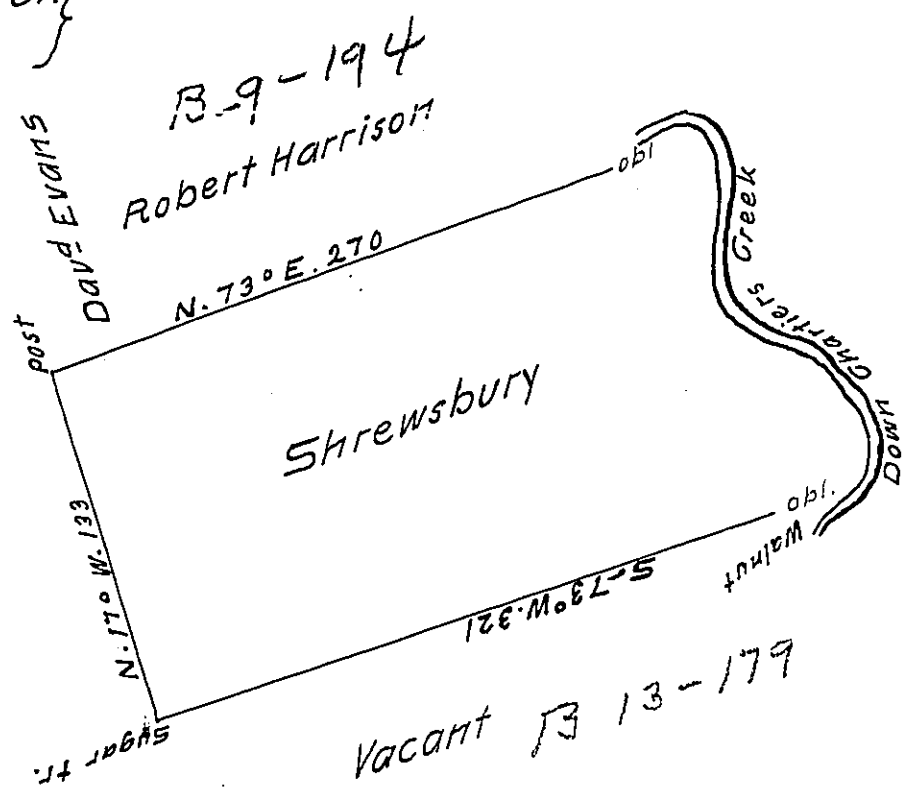


Courses up Chartiers Cr.
 Beg. at a stone & riving }
 N 70° E. 38 #
 S 45 E. 6 #
 South 67 #
 S 60 E. 16 #
 N 75 E. 20 #
 S 56 E. 36 #
 S 27 E. 18 #
 South 19 #
 S 50 W. 25 #
 to a Walnut }



In pursuance of an order N^o 1916 dated 3^d April ¹⁷⁶⁹ the above is a draught of a tract of land call'd Shrewsbury situated on the west side Monongahala containing 288.3 ~~4~~ acres with the usual allowance of 6 # C. for roads & highways &c. survey'd for Paul Fooks 3^d November 1769 by

James Hendricks _____

To John Lukens Esq^r }
 Surveyor General }

IN TESTIMONY that the above is a copy of the original remaining on file in the Department of Internal Affairs of Pennsylvania, made conformably to an Act of Assembly approved the 16th day of February, 1833, I have hereunto set my Hand and caused the Seal of said Department to be affixed at Harrisburg, this first _____ day of December 1911

Nancy Houck
 Secretary of Internal Affairs.